

The screenshot displays the BroadPOS Marketplace Administrator Center interface. The main content area shows the 'Merchant Detail' page for 'Demo Store 1', which is marked as 'Active'. The page includes a list of merchant details and a 'Terminal Statistics' section.

Merchant Name	Reseller	Merchant Type	Contact Name
Demo Store 1	Demo Reseller 2	Retail	CMF

Login Name	Phone No.	Postal Code	Area	Address	Created Time	Updated Time	Description
bbb@xxx.com	904-111-2222	93444	U.S.A - California - Beach Wave	333 Cool Wave Ave.	2019-09-19 17:10	2019-09-19 17:10	-

Terminal Statistics

98% Online

PAXSTORE DELETING TERMINALS AND APPLICATIONS QRG

Date: 11-14-2019

Version: 1.0

Preface

Status: [] Draft [★] Release [] Modify

Copyright © 2019 PAX Technology, Inc. All rights reserved

The Programs (which include both the software and documentation) contain proprietary information; these Programs are provided under a license agreement containing restrictions on use and disclosure and are also protected by copyright, patent, and other intellectual and industrial property laws. Reverse engineering, disassembly, or decompile of the Programs, except to the extent required to obtain interoperability with other independently created software or as specified by law, is prohibited.

This document is provided for informational purposes only. All features and specifications are subject to change without notice. If there are any problems in the documentation, please report said problems to Pax in writing. This document is not warranted to be error-free. Except as may be expressly permitted in the license agreement for these Programs, no part of these Programs may be reproduced or transmitted in any form or by any means, electronic or mechanical, for any purpose.

Security Notice: No part of this publication may be copied, distributed, stored in a retrieval system, translated into any human or computer language, transmitted, in any form or by any means, without the prior written consent of PAX Technology, Inc.

PAX is a registered trademark of PAX Technology Limited in China and/or other countries. All other trademarks or brand names are the properties of their respective holders.

Technical Support

If there is a problem while installing, registering or operating this product, please refer to the documentation. If it is not possible to resolve the issue, please contact customer support.

The level of access to PAX support is governed by the support plan arrangements made between PAX and each Organization. Please consult this support plan for further information about entitlements, including the hours when telephone support is available.

Technical Support Contact Information:

Phone: (877) 859-0099

Email: paxstore.support@pax.us

URL: www.pax.us

Revision History

Date	Version	Description
11-14-2019	v1.0	1. Initial Release

Introduction

This document describes the PAXSTORE procedures on how to delete terminals from the PAXSTORE and applications from the terminals.

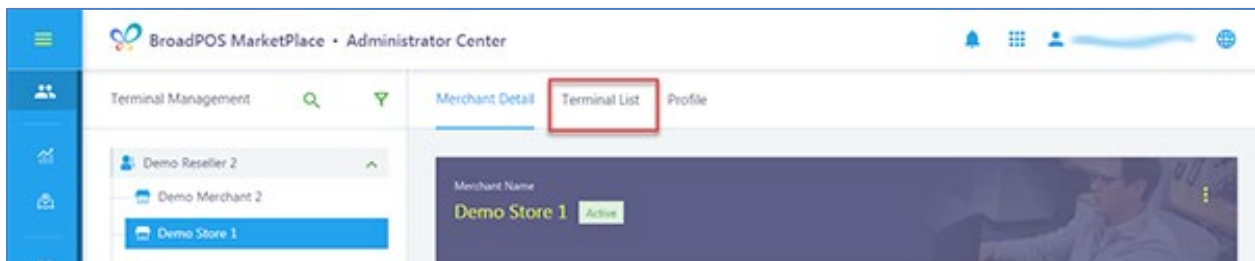
Terminal Requirements

Before a terminal or application can be deleted, it must be assigned to a merchant. The related merchant profile must be activated before it can delete a terminal or application.

How to Delete a Terminal

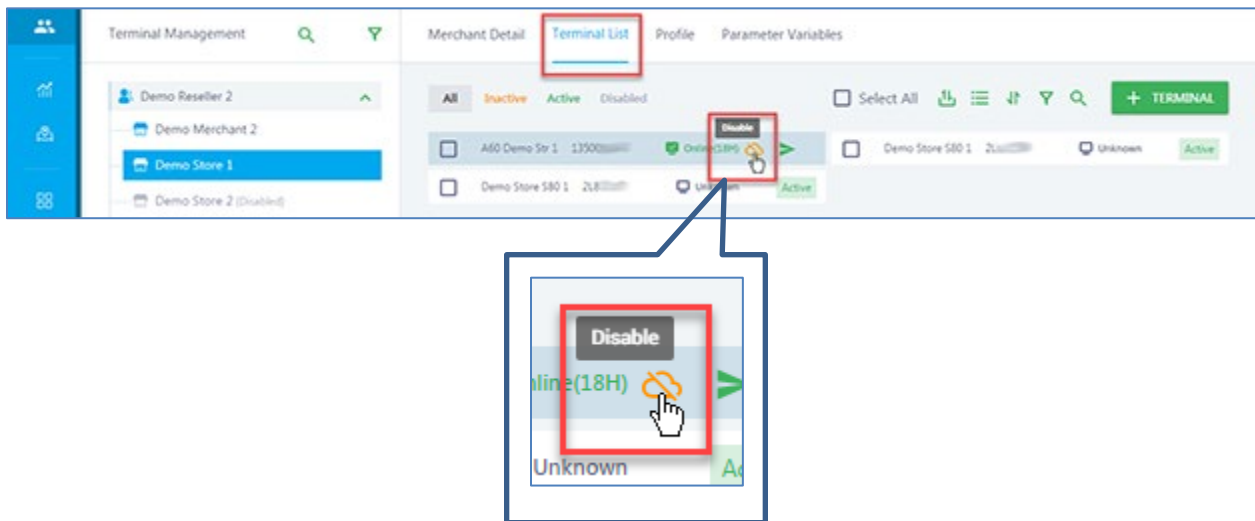
This section covers how to delete a terminal profile in the PAXSTORE.

To locate a terminal profile, from Terminal Management, navigate to the assigned merchant and then select the **[Terminal List]** option. The Terminal List menu screen will display.

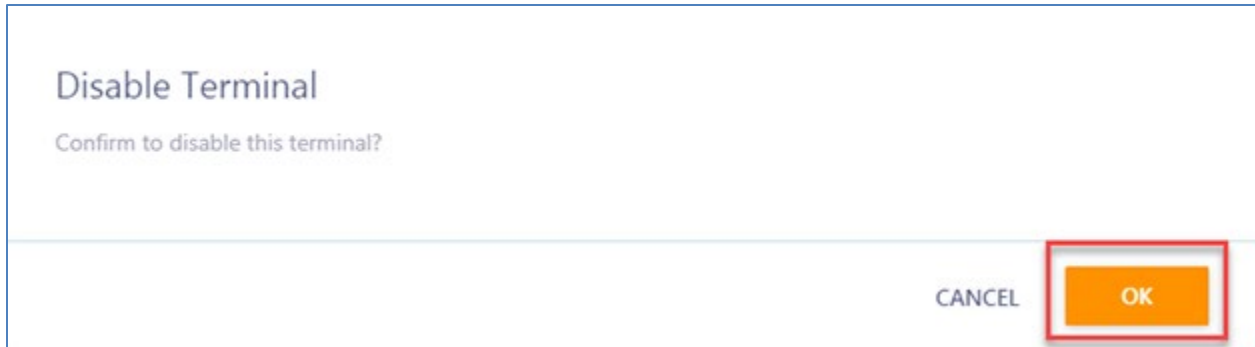


Select the terminal profile to delete. Hover the cursor over the terminal profile and the **Disable** orange cloud icon will display. Select the **[Disable]** icon.

Note: It is required to disable the terminal before deleting the terminal.

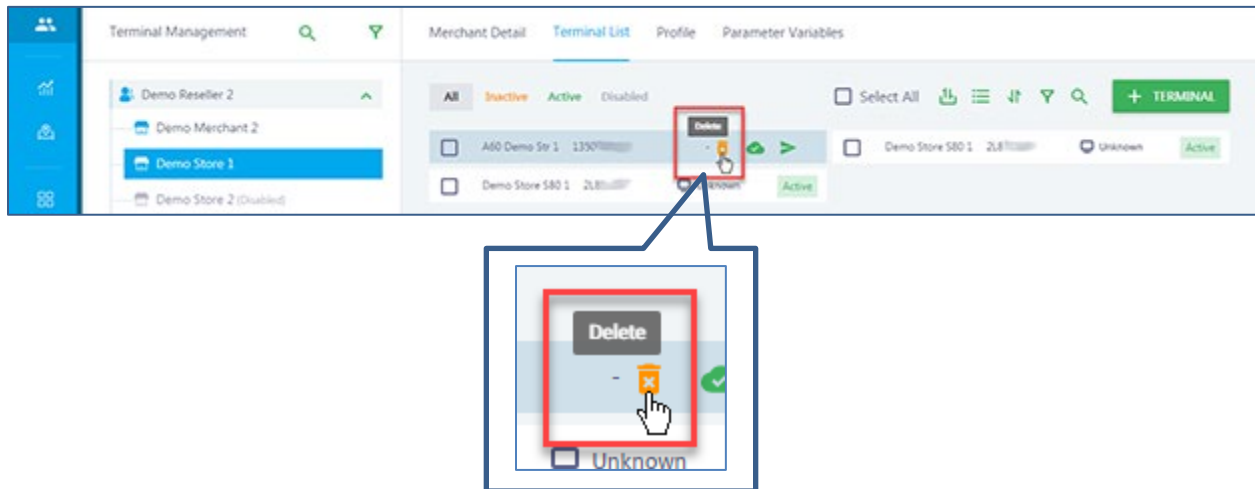


After selecting the Disable option, a pop-up window will display. To confirm disabling the terminal select **[OK]**.

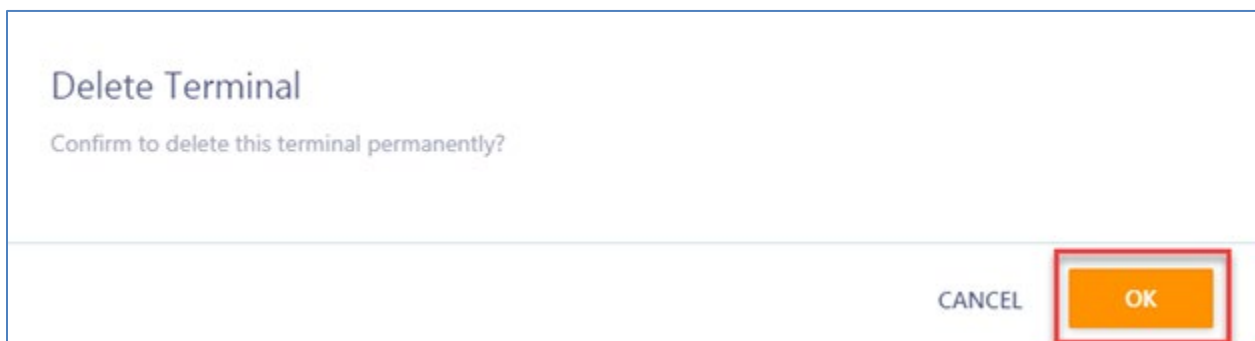


A popup message will display "Disabled successfully".

Select the terminal profile to delete. Hover the cursor over the terminal profile and the **Delete** orange trash can icon will display. Select the **[DELETE]** icon.



After selecting the Delete option, a pop-up window will display. To confirm deleting the terminal select **[OK]**.

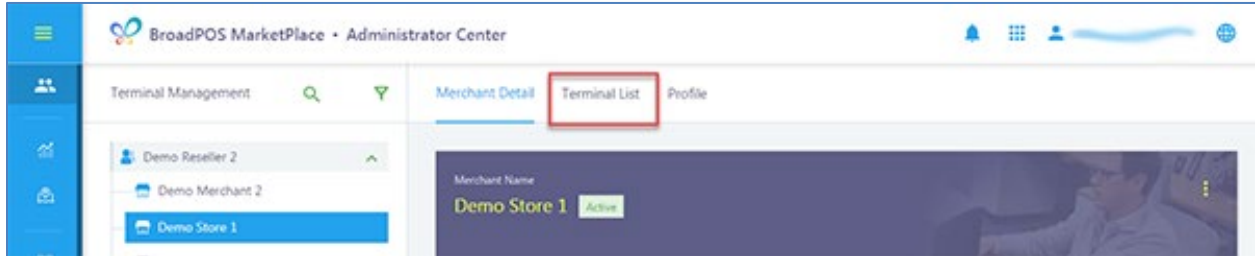


A popup message will display "Record deleted successfully" and the terminal profile will be removed and no longer displayed.

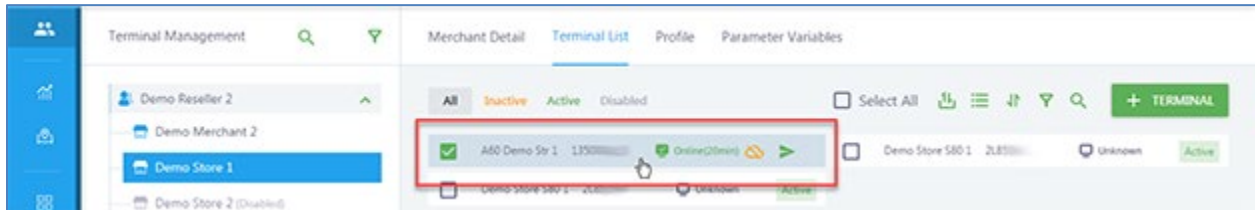
How to Delete an Application

This section covers how to delete an application from a terminal. An application can only be deleted if the terminal profile is active, the terminal is turned on and connected to the internet.

To locate a terminal profile, from Terminal Management, navigate to the assigned merchant and then select the **[Terminal List]** option. The Terminal List menu screen will display.

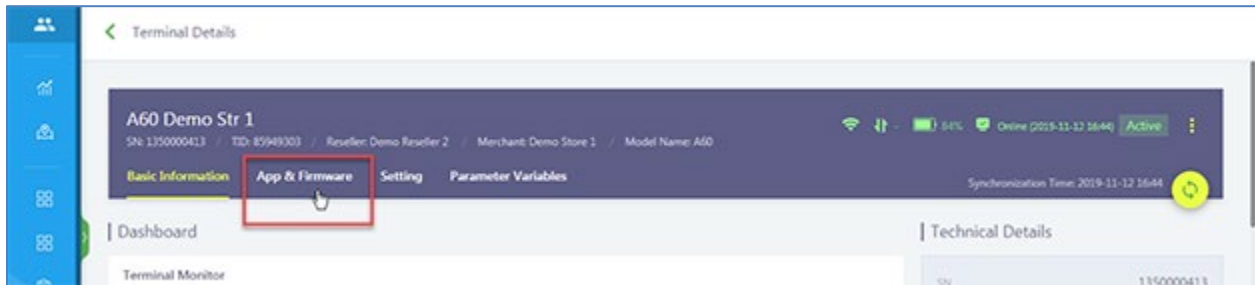


Select the terminal profile to delete an application. Hover the cursor over the terminal profile and then **[Click]**.

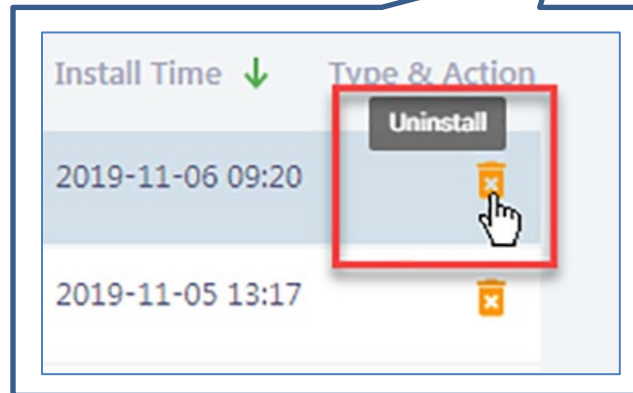
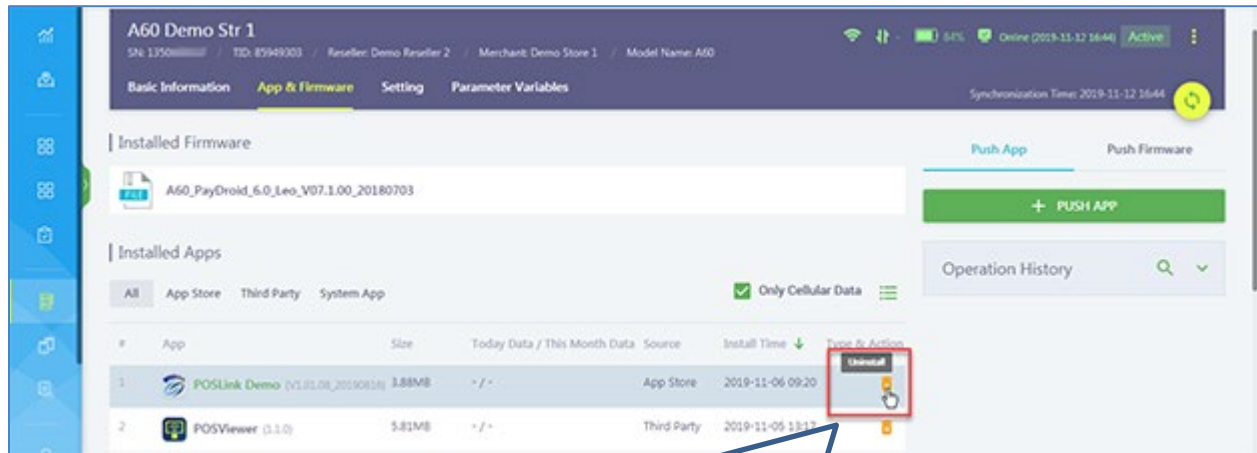


After selecting the terminal profile, the Terminal Details page will display.

In the Terminal Details page select the **[App & Firmware]** option



In the Type & Action column select the **[Uninstall]** orange trash can icon within the selected application to delete. This function will delete the application from the terminal.



After selecting the Uninstall option, a pop-up window will display. To confirm uninstalling the application select **[OK]**.



After the application has been deleted it will be removed from the terminal Install Apps section.

Note: The application can only be deleted if the terminal profile is active, the terminal is turned on and connected to the internet. If the terminal is not turned or not connected to the internet the next time it is turned on and connected to the internet the application will be uninstalled.

PAX Customer Support

For questions or help with the terminal installation please contact your service provider or PAX customer support.

PAX Technology Inc.
8880 Freedom Crossing Trail
Building 400
3rd Floor, Suite 300
Jacksonville, FL 32256
paxstore.support@pax.us
(877) 859-0099
www.pax.us

This document is provided for informational purposes only. All features and specifications are subject to change without notice. The PAX name and PAX logo are registered trademarks of PAX Corporation and/or its affiliates. Other names may be trademarks of their respective owners. Copyright 2019, PAX Technology Limited, All Rights Reserved.

****PAX Technology, Inc. is not responsible for the content, quality, accuracy or completeness of any information or materials contained in on these pages. PAX Technology, Inc. does not endorse any content, viewpoints, products, or services contained on these pages and shall not be held liable for any losses caused by reliance on the accuracy, reliability or timeliness of such information. Any person or entity that relies on any information obtained from these pages does so at his/her own risk.***