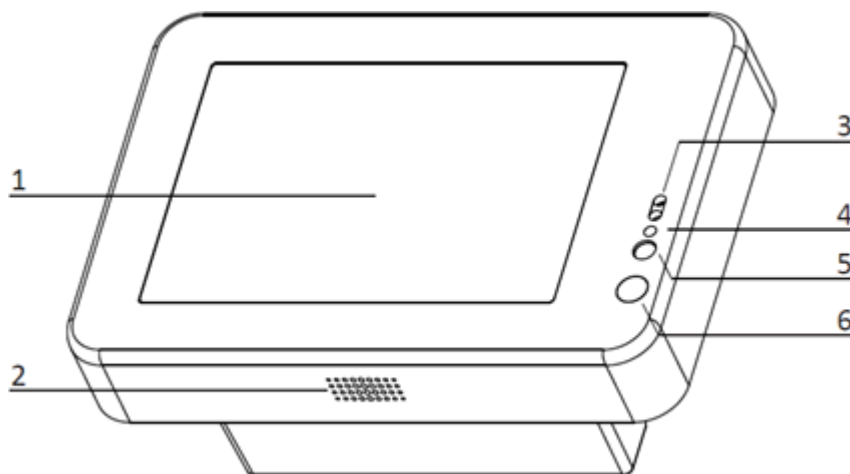


IM15 Quick Setup Guide

Name	Qty.
IM15 Unattended Payment Terminal	1
M4 Nuts	4
M4 Screws	4
Mounting Bracket	1

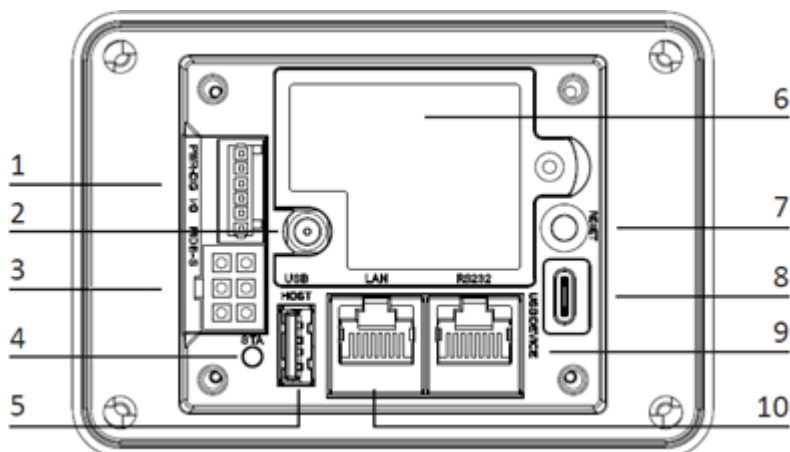
PRODUCT DESCRIPTION

Front View



1. LCD touchscreen
2. Speaker
3. Proximity and light detector
4. LED status indicator
5. Camera flash LED
6. Camera lens

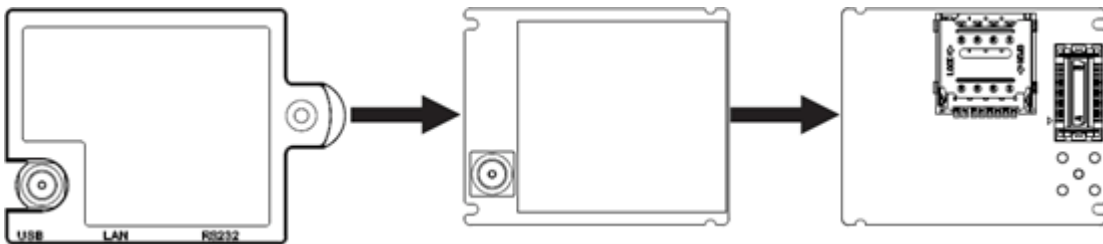
Back View



1. Digital I/O port
2. 4G antenna connector (SMA)
3. MDB port
4. Status LED
5. USB Type-A port
6. Back cover
7. Reset button
8. USB Type-C port
9. RJ45 port (RS233)
10. RJ45 port (Ethernet)

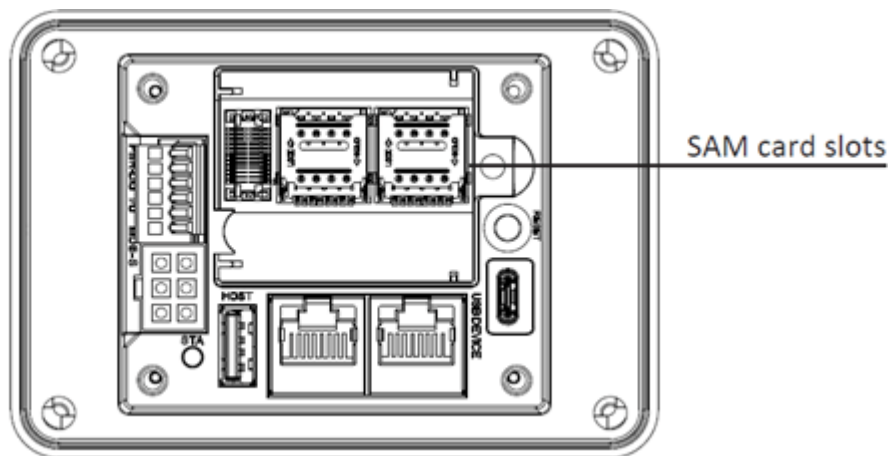
INSTALLATION

SIM Cards



Remove the back cover to reveal the 4G board. Hold the SMA connector and pull the 4G board away from the body of the IM15. Flip the 4G board over to access the SIM card slot. Open the card slot and insert the card into the slot with the contacts facing towards the 4G board and with the clipped corner of the card aligned with the slot, then lock the slot with the card inside.

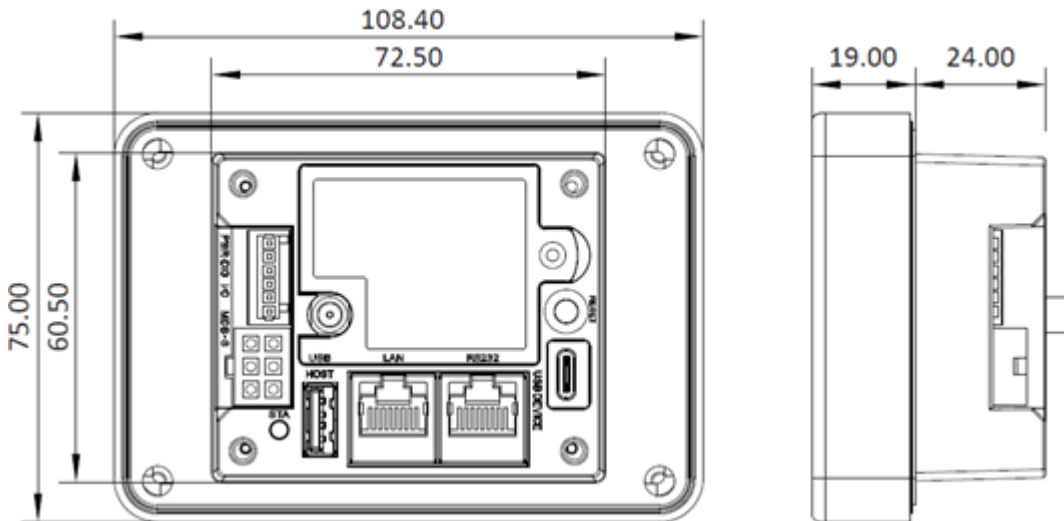
SAM Cards



The 2 SAM cards slots of the IM15 can be seen while the back cover and 4G board are removed. To install a SAM card, open the card slot and insert the card into the slot with the contacts facing towards the IM15 and with the clipped corner of the card aligned with the slot, then lock the slot with the card inside.

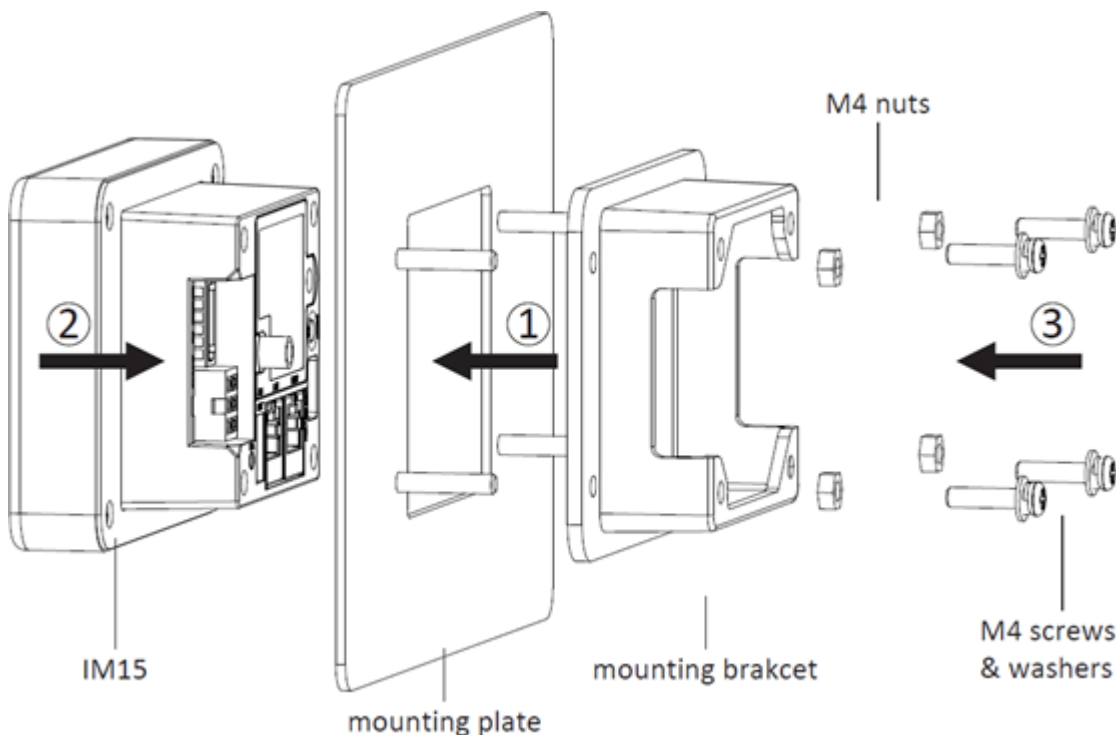
Note: Do not power on the IM15 while installing or removing SIM or SAM cards. To reassemble the device, slot the 4G board into the board to board connector while aligning 4 notches on the board with 4 plastic tabs on the body of the IM15, then replace the back cover and screw it in place.

Device Dimensions



Note: Device dimensions are presented in millimeters (mm).

Device Installation



- The back face of the installation should have four stud bolts corresponding to the mounting points located on mounting bracket. Slide the mounting bracket into place with the orientation shown in the figure above and then fix it in place with four M4 nuts.
- Slide the IM15 unit into place with the orientation shown in the figure above. The back portion of the device should rest securely inside the

mounting bracket.

- Apply a torque of 0.6 to 0.8 Nm to each of the four M4 screws to secure the IM15 unit to its mounting bracket.

Instructions

Power on: Plug the IM15 into an appropriate power source (7 to 48 VDC) via the MDB port, the digital IO port, or the RS232 RJ45 port.

Power off: Disconnect the IM15 from the power source it is connected to.

Contactless Transactions

When the device is ready to accept a contactless transaction, the contactless icon should appear on screen. Orient the card or NFC device parallel to the screen and then hold it at a distance of 4 cm or less directly above the contactless icon.

Code Scanner Transactions

When the device indicates on screen that it is ready to scan a 1D or 2D code, orient the code parallel to the code scanning camera and then place it directly in front of the camera.

Environmental Parameters

- **Operating Temperature:** -20°C to 60°C (-4°F to 140°F)
- **Storage Temperature:** -30°C to 70°C (-22°F to 158°F)
- **Humidity:** 5% to 90% (non-condensing)

Maintenance and Usage

- If repairs are required, contact PAX support.
- If any cables become damaged, seek a replacement.
- Do not insert unknown materials into any port on the IM15, this may cause serious damage to the device.
- Only qualified personnel should repair this product.
- The IM15 is designed for outdoor use; however, during normal use its surface should still be kept clear of dirt and possible liquid contaminants.
- While the IM15 is designed to resist ingress of dust and liquids, it is not designed to resist pressurized liquids such as water hoses. Keep the back of the device away from dust and liquids as much as possible.
- Make sure the various cables connect to provide the appropriate voltages at the proper pins.

CAUTION: Changes or modifications not expressly approved by the party responsible for compliance could void the user's authority to operate the equipment.

FCC Compliance statement

This device complies with Part 15 of the FCC Rules. Operation is subject to the following two conditions:

- 1) This device may not cause harmful interference, and
- 2) This device must accept any interference received, including interference that may cause undesired operation.

Warning

This equipment has been tested and found to comply with the limits for a Class B digital device, pursuant to Part 15 of the FCC Rules. These limits are designed to provide reasonable protection against harmful interference in a residential installation.

This equipment generates, uses and can radiate radio frequency energy and, if not installed and used in accordance with the instructions, may cause harmful interference to radio communications.

However, there is no guarantee that interference will not occur in a particular installation. If this equipment does cause harmful interference to radio or television reception, which can be determined by turning the equipment off and on, the user is encouraged to try to correct the interference by one of the following measures:

- Reorient or relocate the receiving antenna.
- Increase the separation between the equipment and receiver.
- Connect the equipment into an outlet on a circuit different from that to which the receiver is connected.
- Consult the dealer or an experienced radio/TV technician for help.

- **Caution**

Any changes or modifications not expressly approved by the manufacturer could void the user's authority to operate this equipment.

- **Radiation Exposure**

This device complies with FCC radiation exposure limits for general environments.

INDUSTRY CANADA STATEMENT

This device complies with Industry Canada license-exempt RSS standard(s). Operation is subject to the following two conditions:

- 1) This device may not cause interference, and
- 2) This device must accept any interference, including interference that may cause undesired operation of the device.

Le présent appareil est conforme aux CNR d'Industrie Canada applicables aux appareils radio exempts de licence. L'exploitation est autorisée aux deux conditions suivantes:

- 1) l'appareil ne doit pas produire de brouillage, et
- 2) l'utilisateur de l'appareil doit accepter tout brouillage radioélectrique subi, même si le brouillage est susceptible d'en compromettre le fonctionnement.

This device and its antenna(s) must not be co-located or operating in conjunction with any other antenna or transmitter, except tested built-in radios.

Cet appareil et son antenne ne doivent pas être situés ou fonctionner en conjonction avec une autre antenne ou un autre émetteur, exception faites des radios intégrées qui ont été testées.

The Country Code Selection feature is disabled for products marketed in the US/Canada.

La fonction de sélection de l'indicatif du pays est désactivée pour les produits commercialisés aux États-Unis et au Canada.

- Radiation Exposure Statement

This equipment complies with IC radiation exposure limits set forth for an uncontrolled environment. This equipment should be installed and operated with minimum distance 20cm between the radiator & your body.

- Déclaration d'exposition aux radiations

Cet équipement est conforme aux limites d'exposition aux rayonnements IC établies pour un environnement non contrôlé. Cet équipement doit être installé et utilisé avec un minimum de 20 cm de distance entre la source de rayonnement et votre corps.



Trademark notice:

"microSD logo is a trademark of SD-3C LLC."



Trademark notice:

"The Adopted Trademarks HDMI, HDMI High-Definition Multimedia Interface, and the HDMI Logo are trademarks or registered trademarks of HDMI Licensing Administrator, Inc. in the United States and other countries."

The Bluetooth® word mark and logos are registered trademarks owned by Bluetooth SIG, Inc. and any use of such marks by PAX Technology, Inc. is under license. Other trademarks and trade names are those of their respective owners

PAX Technology Inc reserves the right to change product technology specifications without notification.